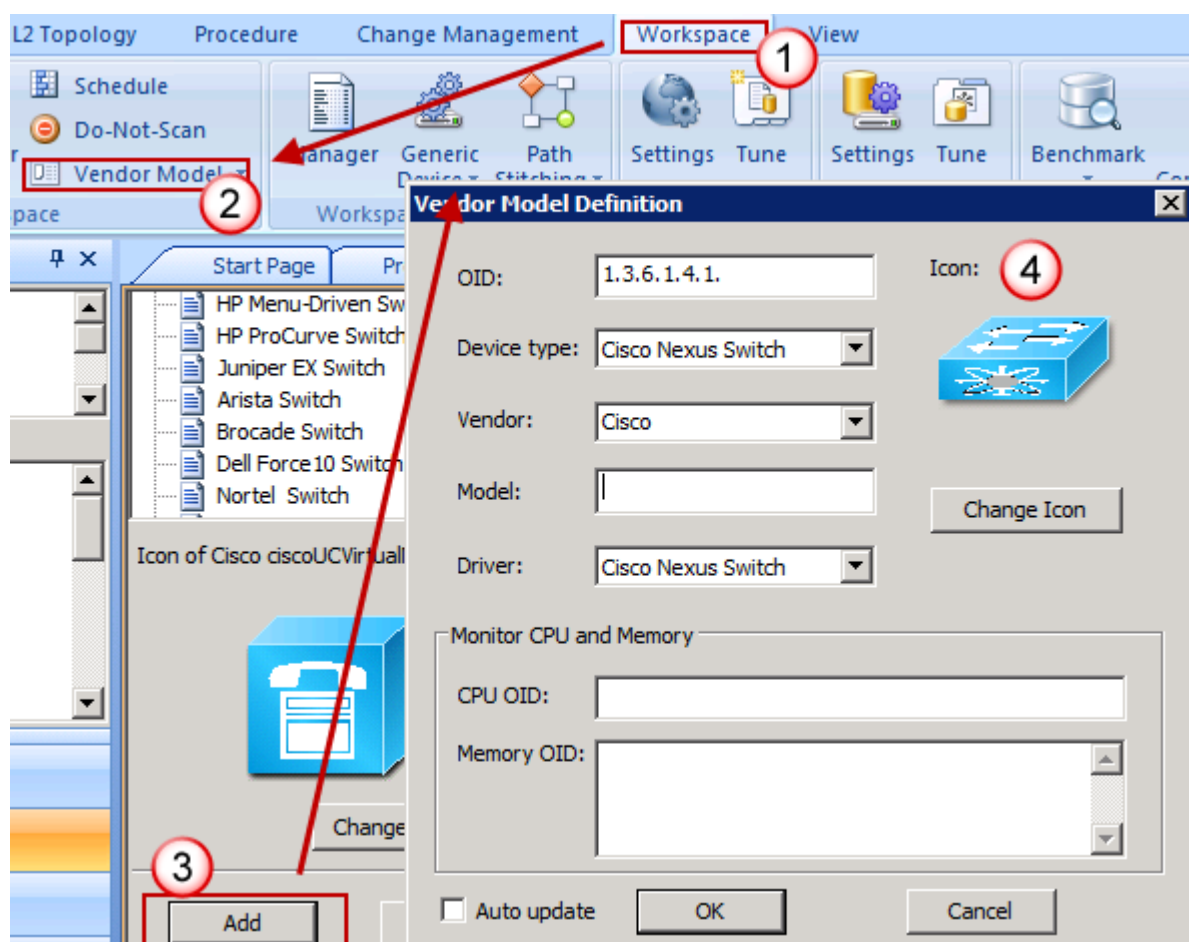


Could you please follow the instruction below to add the OIDs into the vendor model list manually?

1. Right click the device, and select the Properties tab. Then find the OID of the device from the Properties window. Copy the OID in the Properties window.
2. Go to the Vendor Model table to change the corresponding entry. Navigate to the Ribbon menu, switch to the Workspace page, and click the Vendor Model button to open the Vendor Model table.
3. Click Add button to open the Vendor Model Definition window, file the Device type/vendor/model to match the requirements. See sample below:



Note:

- The driver/icon will be changed automatically when you change the device type. Please input the OIDs to Monitor CPU and Memory fields if you know that, or just leave them empty.
- If you have several devices with the same model (same OID), you only need to add one entry in vendor model table.