

4. Expose Dynamic Mapping to Third Party Tools (Netcool Integration)

4.1 Introduction

- NetBrain provides the command line interface to map the path between two points or map around a single device.
- Ticket systems such as Netcool and NetView can integrate with NetBrain via this command line interface. While the command line is invoked from an alert, the map will be created for this alert.
- With one click, a NetBrain map can be exported to a Visio or PNG file.

First Occurrence	Last Occurrence	Count	Node	Summary
1/11/08 9:02:47 AM	1/11/08 11:47:35 AM	314	ATL_DIST72_2	Critical Interface Event: Interface Serial3/0/1 0.1. See Alert Details for more information.
11/16/07 1:27:27 AM	1/11/08 11:47:35 AM	78574	ENUSN1YNYC3895H-Y01	A decapsulated IPSec packet does not match the negotiated identity. An SA selection error is causi...
1/11/08 9:02:48 AM	1/11/08 11:47:34 AM	234	ATL_DIST72_2	Critical Interface Event: Interface Serial3/0/1 0.1. See Alert Details for more in...
1/11/08 11:45:25 AM	1/11/08 11:47:25 AM	3	DBAUN8SYDPYR2-A	Details for more information.
1/11/08 11:45:26 AM	1/11/08 11:47:25 AM	2	DBAUN8SYDPYR2-A	Details for more information.
10/19/07 8:42:39 PM	1/11/08 11:47:05 AM	231,265	MNL1-CE1	an unsupported feature is configured on...
1/11/08 11:45:26 AM	1/11/08 11:45:26 AM	1	DBAUN8SYDPYR2-A	Details for more information.
1/11/08 11:31:32 AM	1/11/08 11:43:25 AM	2	DBAUN8SYDPYR2-A	Details for more information.
1/11/08 11:42:42 AM	1/11/08 11:42:42 AM	2	10.136.23.210	Details for more information.
1/11/08 11:42:42 AM	1/11/08 11:42:42 AM	1	10.136.23.210	Details for more information.
12/21/07 3:22:39 PM	1/11/08 11:40:57 AM	199	TFINDPNCL1F8W02	Details for more information.
1/11/08 11:38:10 AM	1/11/08 11:38:10 AM	1	TFINDPNCL2F8W01	Details for more information.
1/11/08 11:38:10 AM	1/11/08 11:38:10 AM	2	TFINDPNCL2F8W01	Details for more information.
1/8/08 2:30:16 PM	1/11/08 11:33:24 AM	4	DBAUN8SYDPYR2-A	Details for more information.
1/11/08 11:31:11 AM	1/11/08 11:33:11 AM	2	HK_OCL_FEEEDR	Details for more information.
1/11/08 11:32:20 AM	1/11/08 11:32:20 AM	1	OCH-INT WEBDIST32	and port 1/1
1/11/08 10:02:26 AM	1/11/08 11:30:29 AM	3	OCL-CONT17	Details for more information.
1/11/08 11:22:25 AM	1/11/08 11:24:44 AM	4	OCM-PE-DIST6	he inOperStatus of an interface associated...
1/11/08 9:44:54 AM	1/11/08 11:09:15 AM	247	ATL_DIST72_2	0:1 non DR

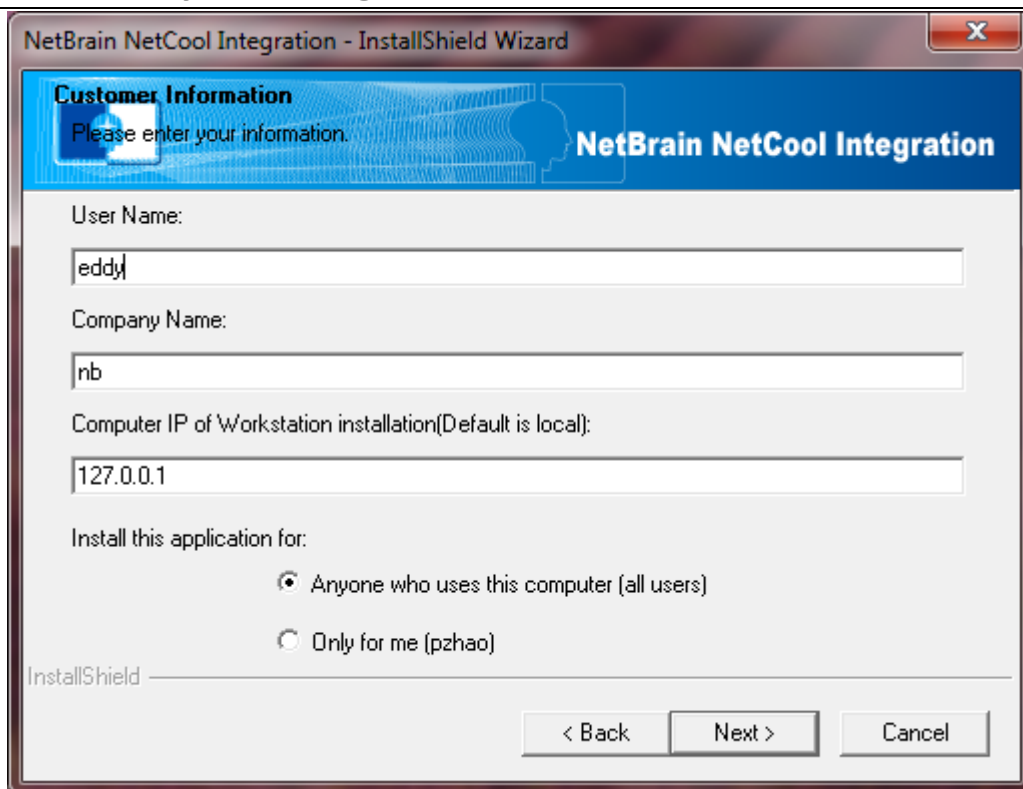
- Create Ticket
- Tools
 - Telnet
 - Telnet (CRT)
 - LocalPing
 - Tracepath
- Maintenance
- OVO Tools
- Online Resources
- Clear Alert
- Acknowledge Ctrl+A
- Deacknowledge Ctrl+D
- GSOC Review
- Return to GSOC view
- Information... Shift+I
- Journal... Ctrl+J
- Quick Filter
- Netbrain smrtmap
- NM Lookup
- Show Config

4.2 Setup Netcool Integration

1. Please download the NetBrain Netcool Integration Software from this link:

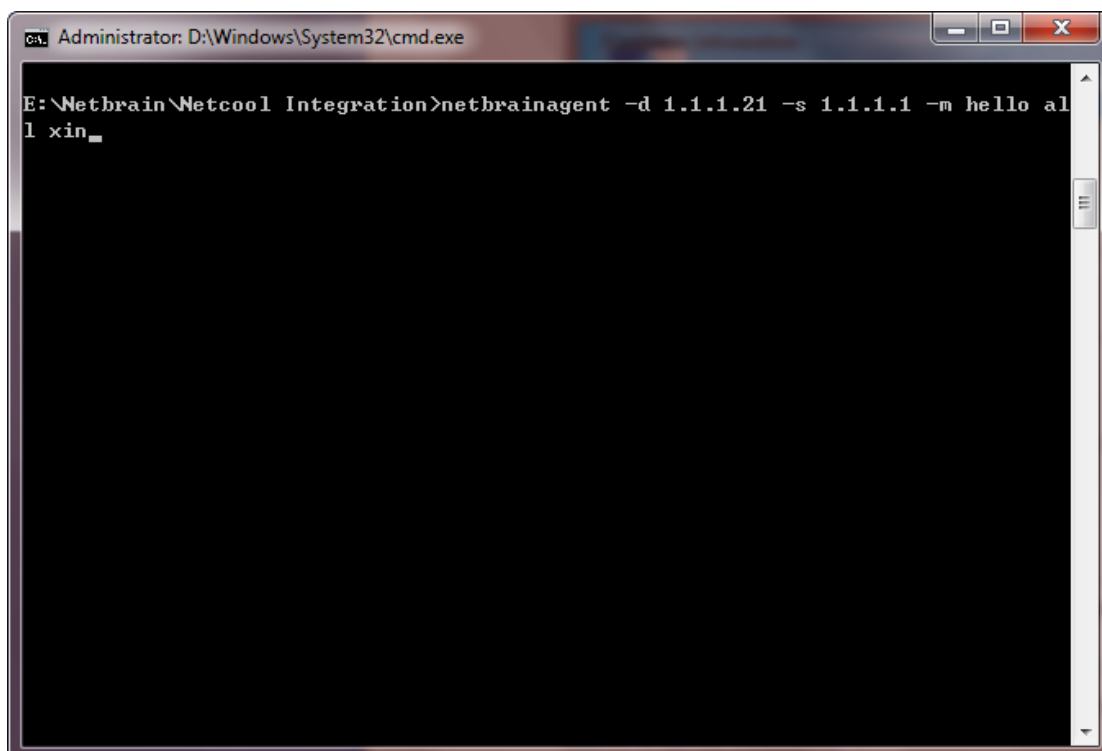
http://forums.netbraintech.com/download/NetBrain_Netcool_Integration.zip

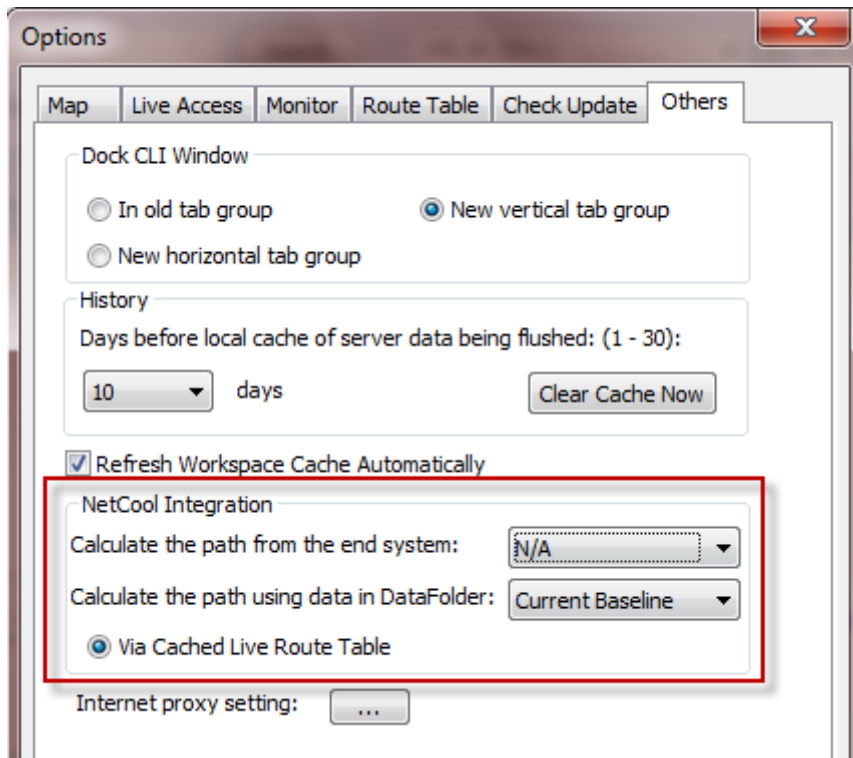
2. Extract the file and follow the instruction to install it.



Note: The system will prompt you to enter the Computer IP of OE workstation, if you also installed the OE in this server, please keep the default settings; otherwise, you may need to enter the IP address of the OE workstation.

3. In the netcool software, please set the correct parameters as shown below:





Calculate the path from the end system: Define a server as the source to calculate the path. The Q-map is created to present the path from this server to the device having network problem.

In case you defined the source end system here, and if you also define the source using `-s` parameter, NetBrain will ignore that parameter and use the option here.

As currently we don't provide function to calculate the path via live network (we may consider to improve this in future release), after calculating the path via cached data folder, if you want to calculate the path via live network, click on the path, and NetBrain will fill the source/destination fields, change the discover settings via live network can calculate again.

